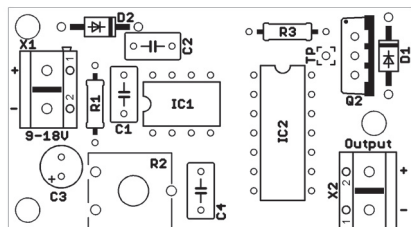


# 555 Noise Maker Kit

MAP 431 - N41FL



- Generates a square wave of adjustable frequency (approx. 20 Hz to 20 kHz). The square wave drives a FET for output into large loads.
- Requires a 9-18V power supply.

### Operation

Connect a 9V to 18V power supply to the terminal block, X1 (observing polarity).

Generates a square wave of adjustable frequency (approx. 20 Hz to 20 kHz). The potentiometer, R2, adjusts the output frequency.

The square wave drives a FET for output into large loads. The logic signal before the FET driver can be tapped from the pad labelled TP (Test Point).

| Part | Value | Device                                      |
|------|-------|---|
| PCB  |       | JB07-3-1-1                                  |
| C1   | 100n  | Ceramic capacitor (5mm pitch)               |
| C2   | 10n   | Ceramic capacitor (5mm pitch)               |
| C3   | 10u   | Electrolytic capacitor, radial              |
| C4   | 100n  | Ceramic capacitor (5mm pitch)               |
| D1   |       | 1N4006                                      |
| D2   |       | 1N4006                                      |
| IC1  |       | 8 pin DIL socket                            |
| IC1  |       | 555   |
| IC2  |       | 14 pin DIL socket                           |
| IC2  |       | 4013  |
| Q2   |       | IRF530                                      |
| R1   | 330R  | Resistor, 0.25W, Carbon film<br>Hex spindle |
| R2   | 1M    | Potentiometer (hex slot)                    |
| R3   | 1k    | Resistor, 0.25W, Carbon film                |
| X1   |       | 2-way terminal block                        |
| X2   |       | 2-way terminal block                        |

### Instruction hints

C3 - Note polarity (marked by minus signs).

D1,D2 - Note polarity (marked by stripe).

IC1 - Note the location of the notch.

IC2 - Note the location of the notch.

Q2 - Note orientation.

### Component markings

C1, C4 104

C2 103

R1 orange, orange, brown

R3 brown, black, red

